

# TechSeal Innovations

## Lathe Cut Advantages

Sometimes, square is better than round!

In many applications, the TechSeal Division's lathe cut rings have many advantages over a round cross-section O-rings. Lathe cut seals are extruded and cut into a rectangular cross-section profile, shaped similar to a washer, and available in a vast combinations of sizes.

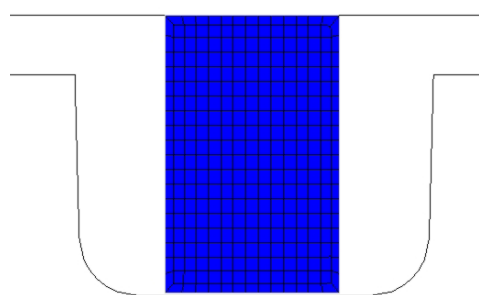
aerospace  
climate control  
electromechanical  
filtration  
fluid & gas handling  
hydraulics  
pneumatics  
process control  
sealing & shielding

### Features, benefits, and advantages:

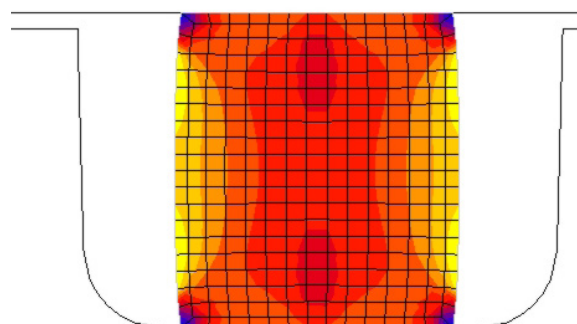
- Larger sealing contact area
- Improved gland stability
- Capable of sealing high pressure applications
- Ideal for radial and axial groove configurations
- Custom sizing for odd grooves
- Little or no tooling
- Tight tolerances
- No flash or parting lines
- Sizes from .020" ID to 19" ID
- Available in most polymer families
- Design assistance available



Lathe cut seals in various sizes, cross-sections, and colors



Face cut seal uncompressed  
(Finite Element Analysis)



Face cut seal compressed  
(Finite Element Analysis)

For more information regarding seals' sizes, colors, materials, and/or design for any specific application, please contact the TechSeal Division and talk to one of the Application Engineers.

Parker Hannifin Corporation  
**TechSeal Division**  
3025 West Croft Circle  
Spartanburg, SC 29302

Phone: 864 573 7332  
[www.parker.com](http://www.parker.com)